



**ICON**<sup>TM</sup>  
CONSTRUCTION  
AND DEVELOPMENT

Phone (503) 657-0406 CCB# 150499

## Bolton Custom

2415 Dillow Dr., West Linn, OR 97068

RMLS #17417117

**\$689,900**

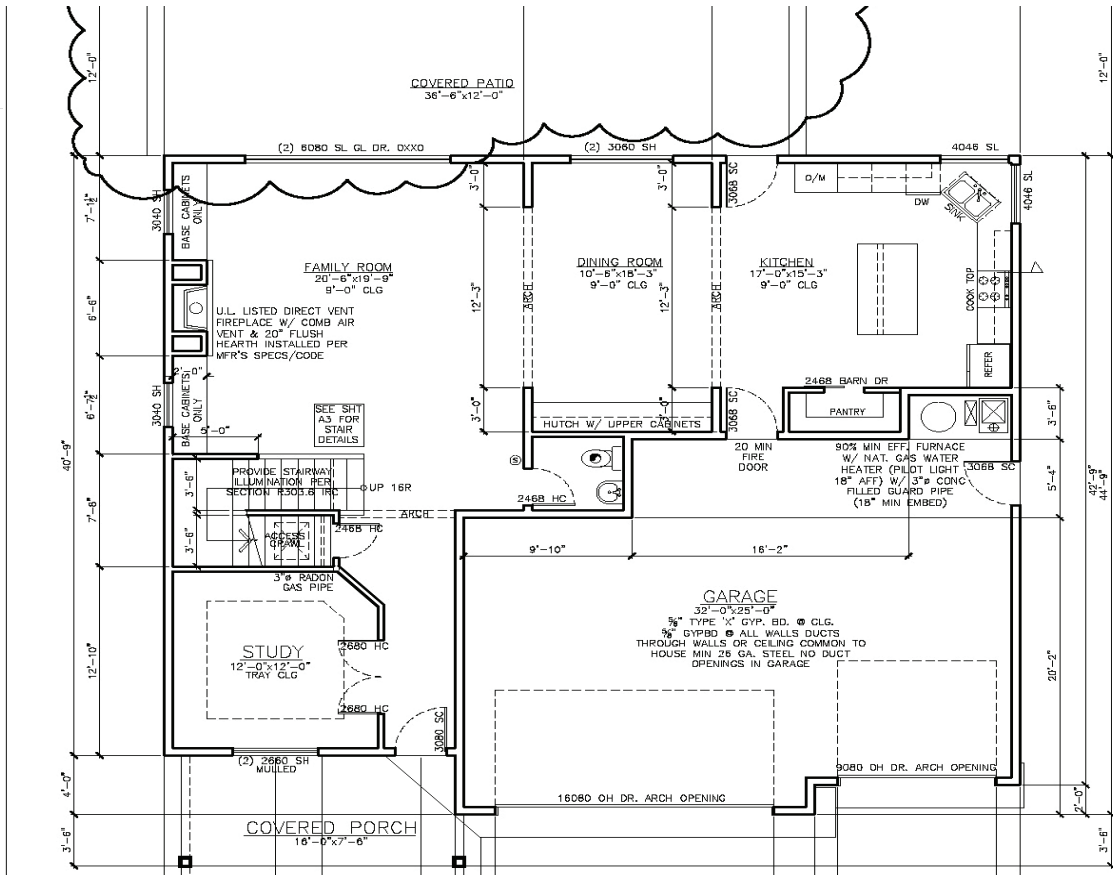


- 3356 approx. sq. ft.
- 4 Bedrooms
- 3.1 Baths
- 3-Car Garage
- Master Retreat
- Large Bonus Room
- Spacious Dining Area
- Great Room concept plan
- Island Kitchen with Walk-in Pantry
- Utility Room upstairs
- Den/Office on the main
- Large Lot
- 30X12 Covered Patio

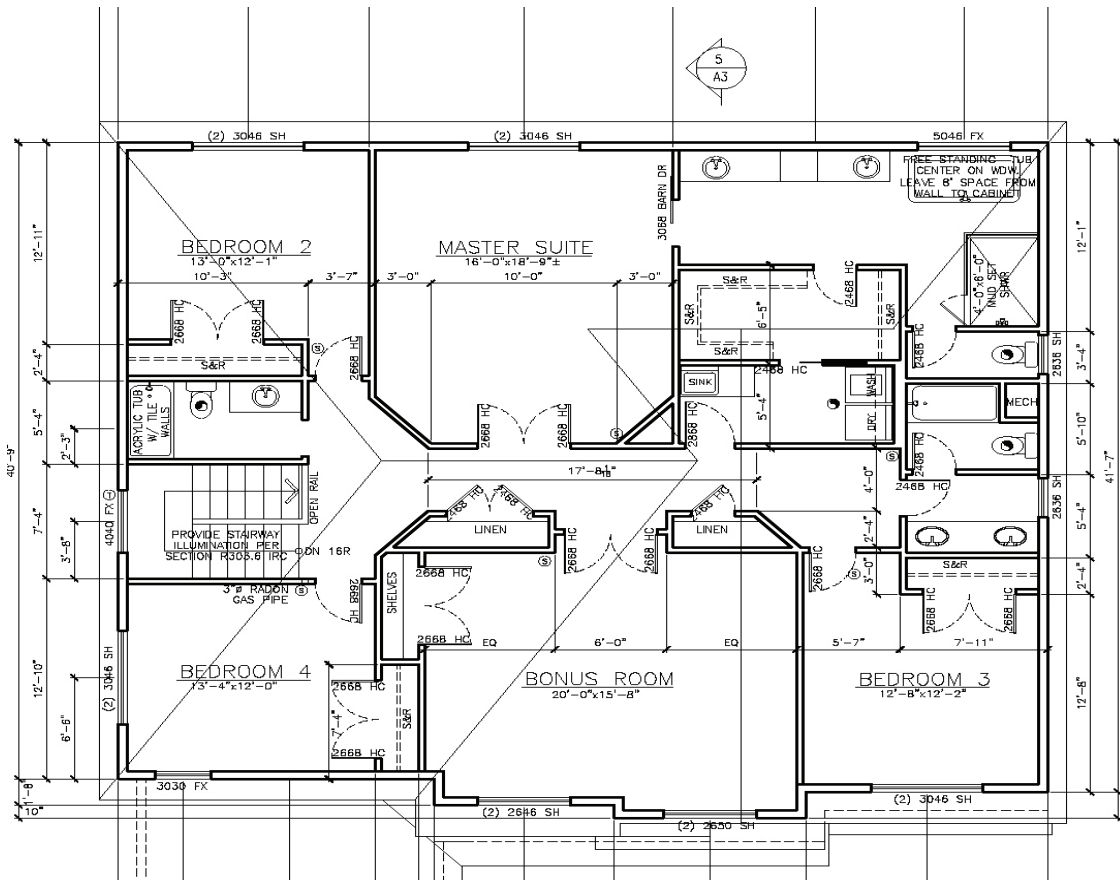


**Andrea Hughes, GRI**  
**Principal Broker**  
**503.522.6255 cell | 503.657.1094**

\*Information deemed reliable although not guaranteed and subject to change.



# Main Level



# Upper Level